

## Angiotensin II receptor type 1 A1166C modifies the association between angiotensinogen M235T and chronic kidney disease

Sui-Lung Su<sup>1,\*</sup>, Wei-Teing Chen<sup>2,\*</sup>, Po-Jen Hsiao<sup>3</sup>, Kuo-Cheng Lu<sup>4</sup>, Yuh-Feng Lin<sup>5</sup>, Chin Lin<sup>1</sup>, Wen Su<sup>6</sup>, Shih-Jen Yeh<sup>7</sup>, Hung Chang<sup>8</sup> and Fu-Huang Lin<sup>1</sup>

<sup>1</sup>School of Public Health, National Defense Medical Center, Taipei, Taiwan

<sup>2</sup>Division of Thoracic Medicine, Department of Medicine, Cheng Hsin General Hospital, Taipei, Taiwan

<sup>3</sup>Division of Nephrology, Department of Internal Medicine, Tri-Service General Hospital, National Defense Medical Center, Taipei, Taiwan

<sup>4</sup>Division of Nephrology, Department of Medicine, Cardinal Tien Hospital, School of Medicine, Fu Jen Catholic University, New Taipei City, Taiwan

<sup>5</sup>Division of Nephrology, Department of Medicine, Shuang Ho Hospital, Graduate Institute of Clinical Medicine, Taipei Medical University, Taipei, Taiwan

<sup>6</sup>Department of Nursing, Tri-Service General Hospital, Taipei, Taiwan

<sup>7</sup>Office of The President, Da-Yeh University, Changhua, Taiwan

<sup>8</sup>Department of Physiology and Biophysics, National Defense Medical Center, Taipei, Taiwan

\*These authors have contributed equally to this work

**Correspondence to:** Fu-Huang Lin, **email:** noldling@ms10.hinet.net

**Keywords:** chronic kidney disease; renin-angiotensin system; polymorphism

**Received:** June 05, 2017

**Accepted:** October 02, 2017

**Published:** October 26, 2017

**Copyright:** Su et al. This is an open-access article distributed under the terms of the Creative Commons Attribution License 3.0 (CC BY 3.0), which permits unrestricted use, distribution, and reproduction in any medium, provided the original author and source are credited.

### ABSTRACT

Single nucleotide polymorphisms (SNPs) in renin-angiotensin system (RAS) genes are associated with RAS imbalance and chronic kidney disease (CKD). We performed a case-control study and meta-analysis to investigate the association between angiotensinogen (AGT) M235T polymorphism and CKD. A total of 634 patients with end-stage renal disease and 739 healthy controls were studied. We also searched PubMed and the Cochrane Library to identify prospective observational studies published before December 2015. We found that the TT and MT genotypes were associated with a higher risk of CKD than the MM genotype (odds ratio [OR]: 3.56; 95% confidence interval [CI]: 1.14–11.16 and OR: 2.93; 95% CI: 0.91–9.46, respectively). Thirty-eight study populations were included in the meta-analysis. The T allele was associated with a higher risk of CKD than the M allele in all populations (OR: 1.19; 95% CI: 1.08–1.32). The OR was 1.33 in Asians (95% CI: 1.06–1.67) and 1.10 in Caucasians (95% CI: 1.02–1.18). Evaluation of gene-gene and gene-environment interactions using epistasis analysis revealed an interaction between AGT M235T and angiotensin II receptor type 1 A1166C in CKD (OR: 0.767; 95% CI: 0.609–0.965). Genetic testing for CKD in high-risk individuals may be an effective strategy for CKD prevention.

### INTRODUCTION

Renal function gradually decreases in chronic kidney disease (CKD) patients resulting in end-stage renal

disease (ESRD). Several studies have reported that the risk of cardiovascular disease mortality was 8–10 times higher among CKD patients compared to other populations, and that the risk increased with decreasing renal function [1].

Risk factors for CKD include diabetes, hyperlipidemia, hypertension, and family history of CKD [2–4]. Diabetes, hyperlipidemia, and hypertension also have strong correlations with heritability [5–7]. Studies have shown that the heritability of serum creatinine was 46% [8]. Thus, genetic factors may have an important role in CKD.

The renin-angiotensin system (RAS) is associated with CKD. If the RAS is overactive, it promotes arterial constriction resulting in an increase in blood pressure and decrease in renal function [9]. The end-product of RAS activity, angiotensin II (Ang II), regulates the synthesis of multiple inflammatory factors associated with CKD such as TNF- $\alpha$ , IL-6, MCP-1, and NF- $\kappa$ B [10]. Therefore, single nucleotide polymorphisms (SNPs) in RAS genes may be associated with CKD. Angiotensinogen (AGT) is a component of the RAS. The *AGT* gene is located on chromosome 1 (1q42-43) [11]. It has an overall length of 13 kb and spans five exons and four introns [12]. Excess ATG results in an increase in angiotensin I (Ang I) synthesis, but the total amount of renin remains constant [13]. Ang I is converted into Ang II, which can cause kidney damage. Previous studies have investigated the association between AGT SNPs and CKD. The C803T polymorphism (rs699) has been frequently reported in previous studies. It is located at amino acid 235 in exon 2 and has two possible alleles (M and T). This variant is commonly referred to as M235T [14]. Functional analysis has indicated that individuals with the T allele have higher serum angiotensin concentrations compared to those with the M allele [15]. A meta-analysis verified that individuals with the T allele had a higher risk of hypertension [14] and heart disease [16] compared to those with the M allele. Thus, this locus may be associated with CKD.

Previous meta-analyses have investigated the association between AGT M235T and diabetic nephropathy [14, 17], IgA neuropathy [18], and ESRD [19]. However, these meta-analyses only included data for 9,000 patients. The association between this locus and CKD differed between Caucasian and Asian populations [17–19]. We performed a large-scale case-control study and meta-analysis to investigate the association between AGT M235T and CKD.

## RESULTS

### Case-control study

The basic demographics and blood biochemical tests for the study population are shown in Table 1. The mean age was  $64.5 \pm 14.9$  and  $72.7 \pm 7.2$  years in the case and control groups, respectively. There were 296 men (46.7%) in the case group and 298 (40.2%) in the control group. The mean BMIs were  $22.4 \pm 4.0$  and  $24.1 \pm 3.2$  kg/m<sup>2</sup> in the case and control groups, respectively. The prevalence of hypertension was 57.8% and 40.8%, and the prevalence of diabetes was 54.2% and 12.3% in the case and control

groups, respectively. The mean total cholesterol level was  $166.0 \pm 36.1$  and  $191.0 \pm 32.5$  mg/dL, the mean triglyceride level was  $158.5 \pm 109.7$  and  $116.1 \pm 60.2$  mg/dL and the mean serum creatinine level was  $9.6 \pm 2.5$  and  $0.8 \pm 0.2$  mg/dL in the case and control groups, respectively. Additionally, the mean glomerular filtration rate was  $5.5 \pm 1.9$  mL and  $90.5 \pm 15.7$  mL/min/1.73 m<sup>2</sup> in the case and control groups, respectively. There were 122 (21.1%) smokers or ex-smokers in the case group and 76 (10.3%) in the control group.

We calculated the association between the AGT M235T polymorphism and the risk of CKD under genotype, allele frequency, dominant, and recessive models (Table 2). Using the M allele as the reference, the OR for the T allele was 1.27 (95% CI: 1.05–1.55;  $p = 0.016$ ). The OR was 1.41 after controlling for age, gender, BMI, smoking, hypertension, and diabetes (95% CI: 1.02–1.95;  $p = 0.035$ ). Similar results were observed with the other genetic models.

### Meta-analysis

The literature review process is shown in Figure 1. We identified 120 publications from PubMed and five from the Cochrane Library (four were also found in PubMed). An additional 13 publications were identified through a search of the reference lists of four published meta-analyses [14, 17–19]. The keywords used in the search and screening processes are shown in Supplementary Table 2. A total of 34 publications were included in our analysis [20–53]. Detailed information for each publication is shown in Supplementary Table 3.

The results of the meta-analysis under an allele model are shown in Figure 2. We found that the risk ratio of the T allele to the M allele was 1.19 (95% CI: 1.08–1.32). The OR of individuals with the T allele was 1.33 (95% CI: 1.06–1.67) in Asians and 1.10 (95% CI: 1.02–1.18) in Caucasians. The estimated  $I^2$  was 74.7% for the entire study population, 84.6% for Asians, and 31.2% for Caucasians. Consolidated results for the other genetic models are shown in Table 3. The results were similar between these models (i.e., the risk of CKD increased with the number of T alleles). These results were observed in all populations investigated. However, the Caucasian population did not show significance under a dominant model [OR: 1.08; 95% CI: (0.98–1.18)]. The consolidated results for all studies using the recessive model were asymmetric (Egger's test  $p = 0.015$ ). Asymmetry could be due to ethnic heterogeneity [54]. We found sufficient symmetry in the analysis of both the Asian and Caucasian subgroups (Egger's test  $p = 0.064$  in Asians; Egger's test  $p = 0.251$  in Caucasians). Therefore, the asymmetry was likely due to ethnic heterogeneity.

Our data indicated that AGT M235T was associated with CKD. However, we observed high study heterogeneity. Therefore, we investigated whether

**Table 1: Characteristics of ESRD and control subjects**

	Case (N = 634)	Control (N = 739)	p-value
Age (years)	64.5 ± 14.9	72.7 ± 7.2	< 0.001
Sex (male)	296 (46.7%)	298 (40.2%)	0.015
BMI (kg/m <sup>2</sup> )	22.4 ± 4.0	24.1 ± 3.2	< 0.001
Hypertension	332 (57.8%)	303 (40.8%)	< 0.001
Diabetes mellitus	213 (54.2%)	91 (12.3%)	< 0.001
TC (mg/dL)	166.0 ± 36.1	191.0 ± 32.5	< 0.001
TG (mg/dL)	158.5 ± 109.7	116.1 ± 60.2	< 0.001
Creatinine (mg/dL)	9.6 ± 2.5	0.8 ± 0.2	< 0.001
eGFR (mL/min/1.73m <sup>2</sup> )	5.5 ± 1.9	90.5 ± 15.7	< 0.001
Smoking	122 (21.1%)	76 (10.3%)	< 0.001

TC: Total cholesterol; TG: Triglycerides; eGFR: Estimated glomerular filtration rate.

**Table 2: The association between AGT M235T and CKD**

	Case	Control	Crude OR (95% CI)	p-value	Adj-OR <sup>a</sup> (95% CI)	p-value	Adj-OR <sup>b</sup> (95% CI)	p-value
Genotype				0.013		0.014		0.066
MM	13 (2.1%)	37 (5.0%)	1		1		1	
MT	168 (26.5%)	205 (27.7%)	2.33 (1.20–4.53)	0.012	2.59 (1.27–5.27)	0.009	2.93 (0.91–9.46)	0.073
TT	453 (71.5%)	497 (67.3%)	2.59 (1.36–4.94)	0.012	2.79 (1.40–5.56)	0.004	3.56 (1.14– 11.16)	0.029
Alleles				0.016		0.027		0.035
M-allele	194 (15.3%)	279 (18.9%)	1		1		1	
T-allele	1074 (84.7%)	1199 (81.1%)	1.27 (1.05–1.55)		1.27 (1.03–1.57)		1.41 (1.02–1.95)	
Dominant model				0.093		0.156		0.106
MM	13 (2.1%)	37 (5.0%)	1		1		1	
MT+TT	621 (98.0%)	702 (95.0%)	1.22 (0.97–1.54)		1.20 (0.93–1.54)		1.36 (0.94–1.97)	
Recessive model				0.005		0.004		0.036
MM+MT	181 (28.5%)	242 (32.7%)	1		1		1	
TT	453 (71.5%)	497 (67.3%)	2.52 (1.33–4.78)		3.01 (1.49–6.10)		3.39 (1.09– 10.58)	

<sup>a</sup>: Adjustment for age and sex.

<sup>b</sup>: Adjustment for age, sex, BMI, hypertension, diabetes, and smoking status.

variables such as race, study design, quality score, kidney function in cases, gender, age, BMI, hypertension, or diabetes mellitus could explain the heterogeneity (Table 4). We used summary information for the case group to analyze gene-environment interactions [55, 56]. However, our data suggested that none of these variables could explain the heterogeneity. Thus, these common environmental factors may not show gene-environment interactions with AGT M235T.

### Epistasis test in meta-analysis

We next used Epistasis Test in Meta-Analysis (ETMA) to analyze gene-gene interactions [57]. We found that the angiotensin II receptor type 1 (AGTR1) A1166C polymorphism was frequently reported along with the AGT M235T polymorphism. Of the 34 included studies, 18 provided information on AGTR1 A1166C [21, 23, 25–27, 31–35, 37–40, 43, 44, 49, 50]. The results of the

ETMA are shown in Table 5. We found that the T allele of AGT M235T [OR: 1.274; 95% CI: (1.174–1.383)] and the C allele of AGTR1 A1166C [OR: 1.296; 95% CI: (1.138–1.476)] were associated with an increased risk of CKD. However, they had a protective effect [OR: 0.767; 95% CI: (0.609–0.965)].

### DISCUSSION

We demonstrated a correlation between AGT M235T and CKD. Individuals with the T allele had a higher risk of CKD than those with the M allele. However, we detected high study heterogeneity which confounded the results. Meta-regression analysis indicated that known environmental factors did not modify the correlation between AGT M235T and CKD. However, gene-gene interactions between AGTR1 A1166C and AGT M235T could explain the study heterogeneity. Individuals

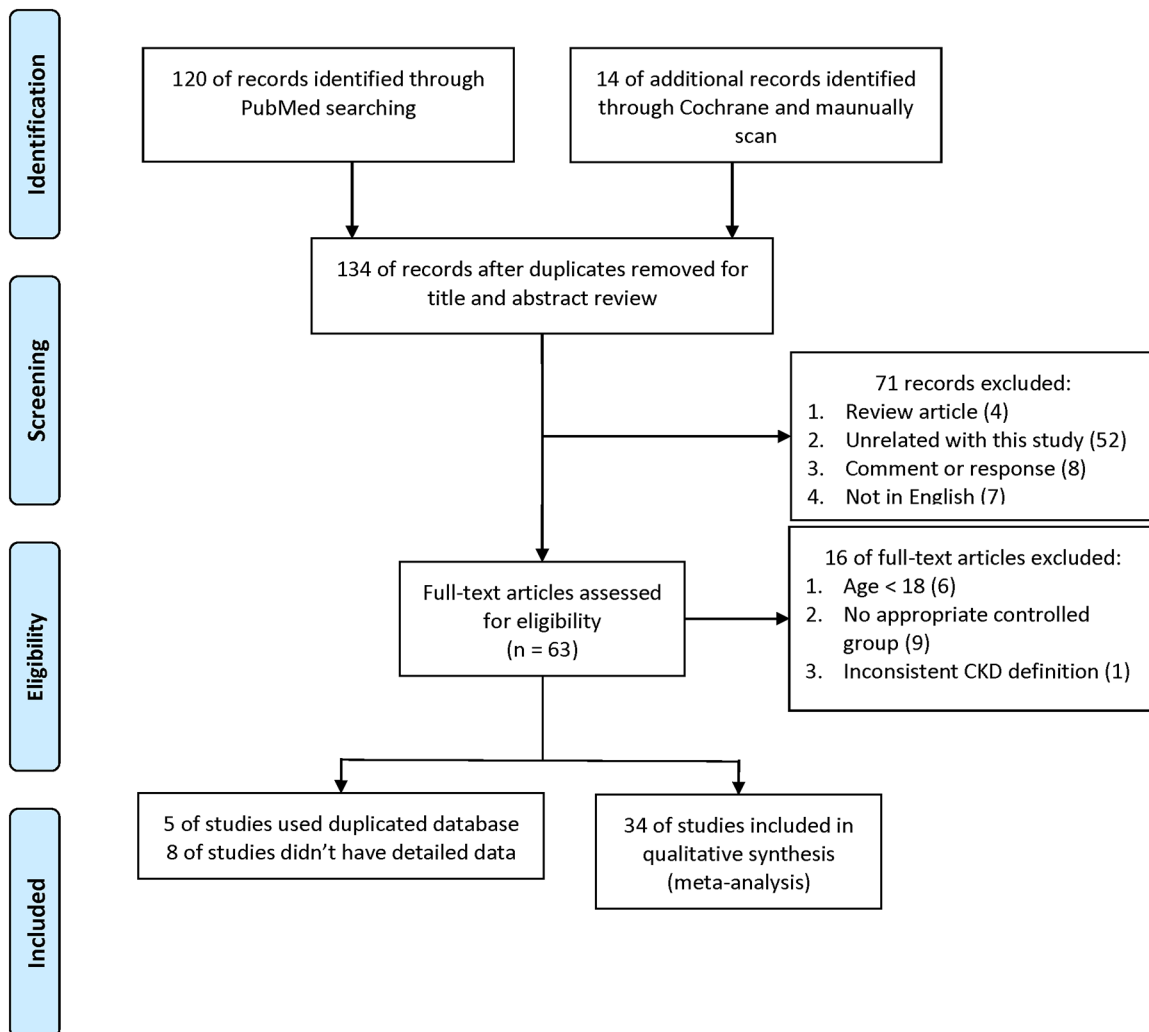
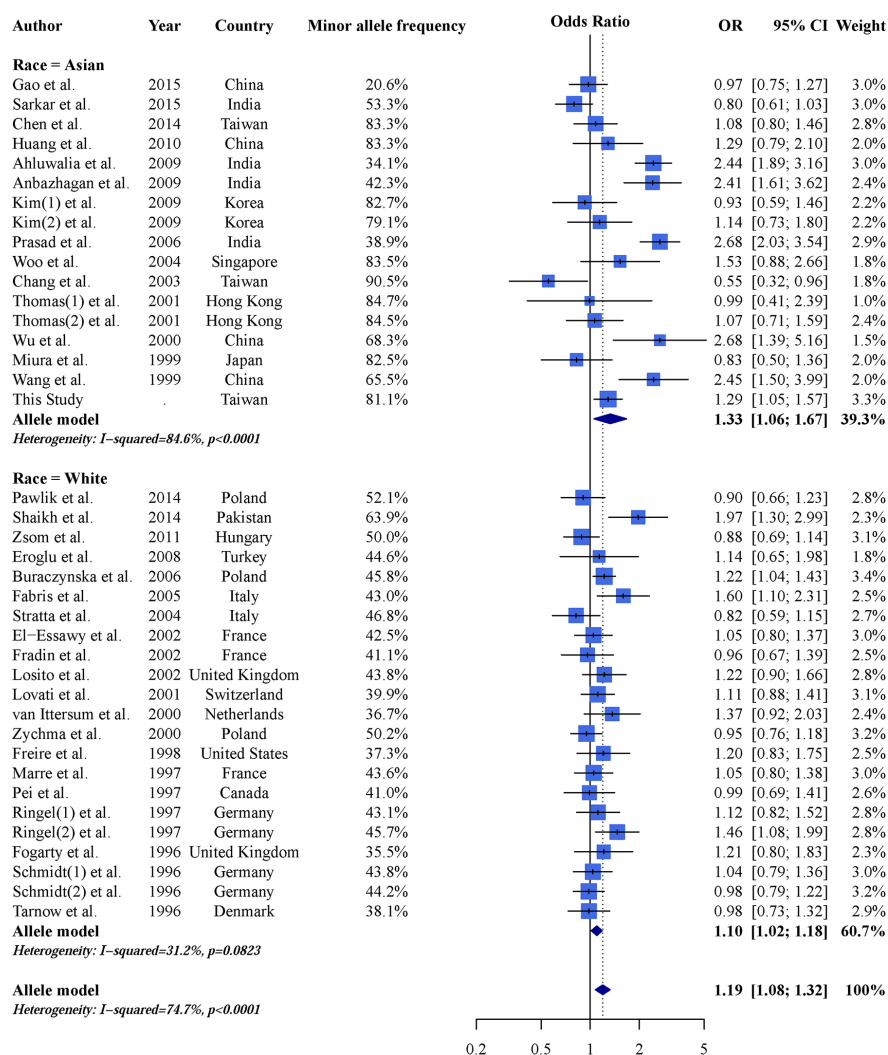


Figure 1: Flow diagram showing the study identification process.

**Table 3: ORs for the association between AGT M235T and CKD under allele type, genotype, dominant, and recessive models**

Model	Total				Asian				Caucasian			
	OR	95% CI	I <sup>2</sup>	Egger's test	OR	95% CI	I <sup>2</sup>	Egger's test	OR	95% CI	I <sup>2</sup>	Egger's test
Allele (T vs. M)	1.19	1.08–1.32	74.7%	0.092	1.33	1.06–1.67	84.6%	0.085	1.10	1.02–1.18	31.2%	0.960
Dominant (TT + MT vs. MM)	1.22	1.06–1.40	58.6%	0.129	1.69	1.14–2.49	71.8%	0.061	1.08	0.98–1.18	0.0%	0.687
Recessive (TT vs. MM + MT)	1.32	1.13–1.53	70.0%	0.015	1.42	1.06–1.89	81.7%	0.064	1.23	1.06–1.42	43.9%	0.251

Egger's test: p value of Egger's regression for asymmetry assessment.



**Figure 2: Forest plot of the meta-analysis results demonstrating an association between AGT M235T and CKD under an allele model (reference allele: M).**

**Table 4: Effects of moderators on the association between AGT M235T and CKD under an allele model (T vs. M)**

	N	$\tau^2$	Adjust $\tau^2$	OR	95% CI	p-value*	Egger's test p-value
Race	39	0.07443	0.0671	0.832	0.678–1.020	0.0768	0.8492
Study design	39	0.07443	0.07496	0.921	0.731–1.159	0.4817	0.5398
Quality score (per 1 score)	39	0.07443	0.07745	0.961	0.868–1.064	0.4429	0.4812
Kidney function (cases)	39	0.07443	0.07892	0.935	0.727–1.203	0.6015	0.5325
Male gender (per 100%)	36	0.07609	0.07786	0.957	0.509–1.799	0.8915	0.6314
Mean age (per 10 years)	38	0.07606	0.07585	1.074	0.970–1.190	0.1703	0.2877
BMI (per 5 kg/m <sup>2</sup> )	18	0.06223	0.05905	0.830	0.625–1.103	0.1989	0.3689
Hypertension (per 100%)	30	0.05367	0.05148	1.791	0.988–3.248	0.0548	0.3524
Diabetes mellitus (per 100%)	28	0.09401	0.1024	1.028	0.680–1.553	0.8973	0.6313

Dependent variable: log OR of AGT M235T and CKD using allele model.

N: number of studies.

Race: Asian is reference; Study design: cross-sectional study is reference.

\*: Significance level is  $p = 0.05/10$  (Bonferroni correction).

**Table 5: ETMA of the interaction between AGT M235T and AGTR1 A1166C in CKD**

	OR (95% CI)	p-value
AGT M235T (T allele vs. M allele)	1.274 (1.174–1.383)	< 0.001
AGTR1 A1166C (C allele vs. A allele)	1.296 (1.138–1.476)	0.001
AGT M235T × AGTR1 A1166C (interaction term)	0.767 (0.609–0.965)	0.026

with the T allele of AGT M235T had higher serum AGT concentrations than those with the M Allele [15]. Excessive ATG can lead to an increase in the concentration of Ang I [13], which is converted into Ang II and can cause kidney damage [10]. Our results are consistent with previous studies that demonstrated an association between RAS and hypertension [14] and heart disease [16].

Several previous meta-analyses have demonstrated a correlation between AGT M235T and CKD [14, 17–19]. However, high study heterogeneity may have impacted the results. We demonstrated gene-gene interactions between AGTR1 A1166C and AGT M235T. Previous studies have found that AGTR1 A1166C may be located in the binding site for microRNA-155 (miR-155), and that the A allele enhances miR-155 binding affinity compared to the C allele resulting in decreased AGTR1 protein expression [58]. Low AGTR1 expression affects Ang II signaling, resulting in decreased synthesis of inflammatory factors such as TNF-alpha, IL-6, MCP-1, and NF- $\kappa$ B [10]. Individuals with the C allele had a higher risk of CKD (OR: 1.296; 95% CI: 1.138–1.476). Similar results were observed in previous studies that investigated the association between AGTR1 A1166C and CKD [59, 60]. Thus, gene-gene interactions exist between AGTR1 A1166C and AGT M235T.

The association between AGT M235T and CKD differed by population. Previous meta-analyses reported a stronger correlation in Asians [14, 17–19]. These results may be explained by the AGTR1 A1166C polymorphism. The 1000 Genomes project reported that the frequency of the C allele was lower in Asians compared to Caucasians [61]. Because the interaction between AGTR1 A1166C and AGT M235T is antagonistic, we would expect an increased risk among Asians compared to Caucasians. Therefore, gene-gene interactions between AGTR1 A1166C and AGT M235T could explain the findings of previous epidemiological studies.

Our study had several limitations. First, we used summary data for the meta-analysis rather than individual patient data. However, previous studies have shown that the inclusion of summary data could increase the sample size and improve the level of evidence [62]. We also performed a case-control study. These results were similar to those of the meta-analysis. Second, we only analysed a few common factors in our gene-environment analysis due to limitations in data availability. Therefore, there may be interactions between AGT M235T and other environmental factors that were not included in our analysis.

We relied on tabular data rather than on individual patient data in our gene-gene interaction analysis, possibly leading to an inflated standard error in pooled analyses. However, we still observed a significant gene-gene interaction between AGT M235T and AGTR1 A1166C in ETMA.

We have demonstrated a correlation between AGT M235T and CKD, which could be modified by AGTR1 A1166C. These data may explain why Asians with the T allele of AGT M235T have a higher risk of CKD. We recommend that patients who are at high-risk for CKD undergo genetic testing.

## MATERIALS AND METHODS

### Case-control study

#### Sample size calculations and study approval

The minimum required sample size was 1,041 subjects. We calculated the size using the following parameters: a two-sided test with a power  $(1 - \beta) = 0.8$  at a significance level of 0.05, ratio of controls to cases = 1, hypothetical proportion of controls with exposure = 87% and least extreme odds ratio (OR) = 1.5 [63].

We initiated a population-based study at Tri-Service General Hospital (TSGH), a medical teaching hospital of the National Defence Medical Centre in Taipei, Taiwan. The study was approved by the Institutional Ethical Committee of Tri-Service General Hospital (TSGH-1-104-05-006). All subjects enrolled in the study provided written informed consent.

#### Subjects

Subjects in the case group were recruited from dialysis centers in TSGH and Cardinal Tien Hospital. All cases were undergoing dialysis and were diagnosed with ESRD. Control subjects who participated in a check-up program from March 2011 were recruited from the Health Management Centre of TSGH. The inclusion criteria for controls were the following: (1) estimated glomerular filtration rate (eGFR) calculated using the MDRD equation of  $> 60$  mL/min/1.73m<sup>2</sup>, (2) no symptoms of kidney damage such as proteinuria and haematuria, (3) no other diseases such as cancer, and (4) blood sample available for genotyping. Demographic data included age, sex, body mass index (BMI: kg/m<sup>2</sup>), history of hypertension, history of diabetes mellitus, and smoking habits, and were obtained from electronic medical records. Laboratory values including total cholesterol, triglycerides, and creatinine levels, were also collected from medical records. The exclusion criteria for patients were as follows: 1) eGFR of more than 15 mL/min per square meter, 2) diagnosed with cancer. A total of 634 cases (296 men and 338 women) and 739 controls (298 men and 441 women) were included in the study who were treated before July 2015.

### Genomic DNA extraction and genotyping

Genomic DNA was extracted from peripheral blood samples using standard procedures for proteinase K (Invitrogen, Carlsbad, CA, USA) digestion and phenol/chloroform extraction. Subjects were genotyped using the iPLEX Gold SNP assay to identify AGT M235T polymorphisms [64]. At least 10% of the samples were randomly selected for repeat genotyping to validate the results.

### Statistical analysis

Continuous variables were evaluated using Student's *t* tests and reported as the mean  $\pm$  standard deviation (SD). Genotypes and allelic frequencies were compared between cases and controls using  $\chi^2$  test or Fisher's exact tests. Logistic regression was used to estimate ORs and 95% confidence intervals (CIs) as a measure of the association with CKD susceptibility. The analysis was performed using allele type, co-dominant, dominant, and recessive models. A  $p < 0.05$  was considered significant. Statistical analyses were performed using the R software, version 3.3.1 (R Project for Statistical Computing, Vienna, Austria).

### Meta-analysis

#### Search methods and criteria for study consideration

The PRISMA checklist and Meta-analysis on Genetic Association Studies Checklist is described in Supplementary Table 1 [65]. We compared the risk of CKD between individuals carrying the major (M) and minor (T) alleles of AGT M235T. Relevant studies were identified through a search of PubMed and the Cochrane Library using keywords and medical subject headings that included all spellings of AGT M235T and CKD. The search strategy and records are shown in Supplementary Table 2. We also manually scanned the reference lists of identified trials and review articles to identify additional candidate studies. All articles published prior to December 2015 were eligible for inclusion.

All studies that assessed the association between AGT M235T polymorphisms and CKD risk were considered for inclusion in our analysis. The inclusion criteria were as follows: (1) cross-sectional survey or case-control study, (2) study population age  $> 18$  years, (3) CKD defined according to the National Kidney Foundation: kidney damage by clinical diagnosis or a glomerular filtration rate  $< 60$  mL/min/1.73 m<sup>2</sup>, (4) included at least one control group with normal kidney function, and (5) genotyping data available. Studies that investigated the relationships between genetic polymorphisms and other kidney diseases (e.g. lupus nephritis, polycystic kidney disease, endemic nephropathy, or reflux nephropathy) were excluded from the analysis. If published data was incomplete, we contacted the authors for further information.

## Data extraction and quality assessment

We recorded the name of the first author, year of publication, ethnicity of the study population, kidney function of cases, case group definitions and characteristics (e.g. mean age, proportion of male subjects, BMI, prevalence of diabetes mellitus, prevalence of hypertension, proportion of smokers, and the AGT M235T genotype distribution). Diabetes mellitus and hypertension were defined by a fasting plasma glucose level of > 126 mg/dL and systolic blood pressure of > 140 mmHg. If the article did not report the prevalence of diabetes mellitus and hypertension or the definitions did not match, we assumed a normal distribution of plasma glucose level and systolic blood pressure.

Risk of bias was assessed using the Newcastle-Ottawa Quality Assessment Scale [66]. The following factors are considered: (1) study population selection, (2) comparability between the case and control groups, and (3) the exposure. Each study received a score between 0 and 9. We investigated the relationship between study quality and the estimation of risk.

## Statistical analysis

The characteristics of the individual study populations are presented as means or proportions where appropriate. We evaluated the association between AGT M235T polymorphisms and CKD risk in each study using ORs and 95% CIs. Heterogeneity was assessed using the  $\tau^2$  statistic, which was estimated using the DerSimonian-Laird method, and a random-effects model was used to calculate the weighted effect size. Associations between AGT polymorphisms and CKD risk were calculated using an allele type, genotype, dominant, and recessive model.

Egger's regression and funnel plots were used to evaluate the symmetry of the pooled results. The  $I^2$  was calculated with Cochran Q tests and used to quantify study heterogeneity. An  $I^2 > 50\%$  was indicative of moderate-to-high heterogeneity.

A meta-regression analysis of average summary values was used to explore the source of heterogeneity. According to our previous studies, the average summary value of a case group can be used to build a model and can facilitate interaction effect estimation [29]. An interaction effect is determined using the OR and defined as the ratio between ORs per 1 unit. Possible moderators (race, study design, quality score, kidney function of case, sex, age, BMI, hypertension, diabetes mellitus and smoking) were tested to explore heterogeneity.

For further explain the unexplained heterogeneity between included studies, we considered explore gene-gene interaction in our meta-analysis. Although meta-regression is a common approach to assessing interaction effects in meta-analysis, but it is not suitable for analyzing gene-gene interaction. The most important problem is attenuation bias, and these random errors will lead

to inconsistent estimates of interaction effects but this phenomenon does not occur in individual data analysis [57]. ETMA (Epistasis Test in Meta-Analysis) is a Markov Chain Monte Carlo based method for consistency the estimate. We used the "etma" package of R software to implement this analysis.

This study considered a p value of <0.05 to be significant. However, because of multiple comparison correction, a  $p < 0.05$  was considered significant. Statistical analyses were conducted using the 'metafor' and 'meta' packages for the R software, version 3.3.1.

## CONFLICTS OF INTEREST

The authors declare that there are no conflicts of interest.

## REFERENCES

1. Go AS, Chertow GM, Fan D, McCulloch CE, Hsu CY. Chronic kidney disease and the risks of death, cardiovascular events, and hospitalization. *N Engl J Med.* 2004; 351:1296-305. <https://doi.org/10.1056/NEJMoa041031>.
2. Kuo HW, Tsai SS, Tiao MM, Yang CY. Epidemiological features of CKD in Taiwan. *Am J Kidney Dis.* 2007; 49:46-55. <https://doi.org/10.1053/j.ajkd.2006.10.007>.
3. Wen CP, Cheng TY, Tsai MK, Chang YC, Chan HT, Tsai SP, Chiand PH, Hsu CC, Sung PK, Hsu YH, Wen SF. All-cause mortality attributable to chronic kidney disease: a prospective cohort study based on 462 293 adults in Taiwan. *Lancet.* 2008; 371:2173-82. [https://doi.org/10.1016/S0140-6736\(08\)60952-6](https://doi.org/10.1016/S0140-6736(08)60952-6).
4. Hwang SJ, Tsai JC, Chen HC. Epidemiology, impact and preventive care of chronic kidney disease in Taiwan. *Nephrology (Carlton).* 2010; 15(Suppl 2):3-9. <https://doi.org/10.1111/j.1440-1797.2010.01304.x>.
5. Poulsen P, Kyvik KO, Vaag A, Beck-Nielsen H. Heritability of type II (non-insulin-dependent) diabetes mellitus and abnormal glucose tolerance--a population-based twin study. *Diabetologia.* 1999; 42:139-45.
6. Chen CJ, Yu MW, Wang CJ, Tong SL, Tien M, Lee TY, Lue HC, Huang FY, Lan CC, Yang KH. Genetic variance and heritability of serum cholesterol and triglycerides among Chinese twin neonates. *Acta geneticae medicae et gemellologiae.* 1990; 39:123-31.
7. Shih PA, O'Connor DT. Hereditary determinants of human hypertension: strategies in the setting of genetic complexity. *Hypertension.* 2008; 51:1456-64. <https://doi.org/10.1161/hypertensionaha.107.090480>.
8. Fox CS, Yang Q, Cupples LA, Guo CY, Larson MG, Leip EP, Wilson PW, Levy D. Genomewide linkage analysis to serum creatinine, GFR, and creatinine clearance in a community-based population: the Framingham Heart



- Study. *JASN*. 2004; 15:2457-61. <https://doi.org/10.1097/01.asn.0000135972.13396.6f>.
9. Remuzzi G, Perico N, Macia M, Ruggenenti P. The role of renin-angiotensin-aldosterone system in the progression of chronic kidney disease. *Kidney International Supplement*. 2005; S57-65. <https://doi.org/10.1111/j.1523-1755.2005.09911.x>.
  10. Ruiz-Ortega M, Ruperez M, Lorenzo O, Esteban V, Blanco J, Mezzano S, Egido J. Angiotensin II regulates the synthesis of proinflammatory cytokines and chemokines in the kidney. *Kidney International Supplement*. 2002; S12-22. <https://doi.org/10.1046/j.1523-1755.62.s82.4.x>.
  11. Gaillard-Sanchez I, Mattei MG, Clauser E, Corvol P. Assignment by in situ hybridization of the angiotensinogen gene to chromosome band 1q4, the same region as the human renin gene. *Human genetics*. 1990; 84:341-3.
  12. Jeunemaitre X, Inoue I, Williams C, Charru A, Tichet J, Powers M, Sharma AM, Gimenez-Roqueplo AP, Hata A, Corvol P, Lalouel JM. Haplotypes of angiotensinogen in essential hypertension. *American journal of human genetics*. 1997; 60:1448-60. <https://doi.org/10.1086/515452>.
  13. Caulfield M, Lavender P, Newell-Price J, Kamdar S, Farrall M, Clark AJ. Angiotensinogen in human essential hypertension. *Hypertension*. 1996; 28:1123-5.
  14. Staessen JA, Kuznetsova T, Wang JG, Emelianov D, Vlietinck R, Fagard R. M235T angiotensinogen gene polymorphism and cardiovascular renal risk. *Journal of Hypertension*. 1999; 17:9-17.
  15. Jeunemaitre X, Soubrier F, Kotelevtsev YV, Lifton RP, Williams CS, Charru A, Hunt SC, Hopkins PN, Williams RR, Lalouel JM. Molecular basis of human hypertension: role of angiotensinogen. *Cell*. 1992; 71:169-80.
  16. Wang B, Guo Q, Peng Y, Lu J, Singh B, Hua B. Association of AGT M235T and ACE I/D polymorphisms with the risk of ischemic stroke: meta-analysis in Han Chinese population. *Journal of the neurological sciences*. 2012; 320:79-84. <https://doi.org/10.1016/j.jns.2012.06.022>.
  17. Ding W, Wang F, Fang Q, Zhang M, Chen J, Gu Y. Association between two genetic polymorphisms of the renin-angiotensin-aldosterone system and diabetic nephropathy: a meta-analysis. *Molecular biology reports*. 2012; 39:1293-303. <https://doi.org/10.1007/s11033-011-0862-7>.
  18. Mao S, Huang S. Association of angiotensinogen gene M235T polymorphism with the risk of IgA nephropathy: a meta-analysis. *Renal failure*. 2014; 36:466-72. <https://doi.org/10.3109/0886022x.2013.868318>.
  19. Zhou TB, Yin SS, Qin YH. Association of angiotensinogen M235T gene polymorphism with end-stage renal disease risk: a meta-analysis. *Molecular biology reports*. 2013; 40:765-72. <https://doi.org/10.1007/s11033-012-2114-x>.
  20. Sarkar S, Gupta V, Kumar A, Chaudhary M, Diyundi S, Sehajpal PK, Thangaraj K, Rajenfer S. M235T polymorphism in the AGT gene and A/G(I8-83) substitution in the REN gene correlate with end-stage renal disease. *Nephron*. 2015; 129:104-8. <https://doi.org/10.1159/000370074>.
  21. Gao J, Yu QL, Fu RG, Wei LT, Wang M, Dong FM, Wang Z, Yang PT, Liu XH, Dai ZJ. Lack of Association Between Polymorphisms in AGT and ATR1 and IgA Nephropathy in a Chinese Population. *Genetic testing and molecular biomarkers*. 2015; 19:710-3. <https://doi.org/10.1089/gtmb.2015.0167>.
  22. Pawlik M, Mostowska A, Lianeri M, Oko A, Jagodzinski PP. Association of aldosterone synthase (CYP11B2) gene -344T/C polymorphism with the risk of primary chronic glomerulonephritis in the Polish population. *JRAAS*. 2014; 15:553-8. <https://doi.org/10.1177/1470320313489588>.
  23. Chen WJ, Huang YL, Shiue HS, Chen TW, Lin YF, Huang CY, Lin YC, Han BC, Hsueh YM. Renin-angiotensin-aldosterone system related gene polymorphisms and urinary total arsenic is related to chronic kidney disease. *Toxicology and applied pharmacology*. 2014; 279:95-102. <https://doi.org/10.1016/j.taap.2014.05.011>.
  24. Shah VN, Cheema BS, Sharma R, Khullar M, Kohli HS, Ahluwalia TS, Mohan V, Bhansali A. ACACbeta gene (rs2268388) and AGTR1 gene (rs5186) polymorphism and the risk of nephropathy in Asian Indian patients with type 2 diabetes. *Molecular and cellular biochemistry*. 2013; 372:191-8. <https://doi.org/10.1007/s11010-012-1460-2>.
  25. Zsom M, Fulop T, Zsom L, Barath A, Maroti Z, Endreffy E. Genetic polymorphisms and the risk of progressive renal failure in elderly Hungarian patients. *Hemodialysis international International Symposium on Home Hemodialysis*. 2011; 15:501-8. <https://doi.org/10.1111/j.1542-4758.2011.00593.x>.
  26. Huang HD, Lin FJ, Li XJ, Wang LR, Jiang GR. Genetic polymorphisms of the renin-angiotensin-aldosterone system in Chinese patients with end-stage renal disease secondary to IgA nephropathy. *Chinese medical journal*. 2010; 123:3238-42.
  27. Kim SM, Chin HJ, Oh YK, Kim YS, Kim S, Lim CS. Blood pressure-related genes and the progression of IgA nephropathy. *Nephron Clinical practice*. 2009; 113:c301-8. <https://doi.org/10.1159/000235948>.
  28. Anbazhagan K, Sampathkumar K, Ramakrishnan M, Gomathi P, Gomathi S, Selvam GS. Analysis of polymorphism in renin angiotensin system and other related genes in South Indian chronic kidney disease patients. *Clinica chimica acta*. 2009; 406:108-12. <https://doi.org/10.1016/j.cca.2009.06.003>.
  29. Ahluwalia TS, Ahuja M, Rai TS, Kohli HS, Bhansali A, Sud K, Khullar M. ACE variants interact with the RAS pathway to confer risk and protection against type 2 diabetic nephropathy. *DNA and cell biology*. 2009; 28:141-50. <https://doi.org/10.1089/dna.2008.0810>.
  30. Eroglu Z, Cetinkalp S, Erdogan M, Kosova B, Karadeniz M, Kutukculer A, Gunduz C, Tetik A, Topcuoglu N, Ozgen AG, Tuzun M. Association of the angiotensinogen M235T

- and angiotensin-converting enzyme insertion/deletion gene polymorphisms in Turkish type 2 diabetic patients with and without nephropathy. *Journal of diabetes and its complications*. 2008; 22:186-90. <https://doi.org/10.1016/j.jdiacomp.2006.12.004>.
31. Prasad P, Tiwari AK, Kumar KM, Ammini AC, Gupta A, Gupta R, Sharma AK, Rao AR, Nagendra R, Chandra TS, Tiwari SC, Rastogi P, Gupta BL, Thelma BK. Chronic renal insufficiency among Asian Indians with type 2 diabetes: I. Role of RAAS gene polymorphisms. *BMC medical genetics*. 2006; 7:42. <https://doi.org/10.1186/1471-2350-7-42>.
  32. Buraczynska M, Ksiazek P, Drop A, Zaluska W, Spasiewicz D, Ksiazek A. Genetic polymorphisms of the renin-angiotensin system in end-stage renal disease. *Nephrology, dialysis, transplantation*. 2006; 21:979-83. <https://doi.org/10.1093/ndt/gfk012>.
  33. Fabris B, Bortoletto M, Candido R, Barbone F, Cattin MR, Calci M, Scanferla F, Tizzoni L, Giacca M, Carretta R. Genetic polymorphisms of the renin-angiotensin-aldosterone system and renal insufficiency in essential hypertension. *Journal of hypertension*. 2005; 23:309-16.
  34. Woo KT, Lau YK, Choong LH, Zhao Y, Tan HB, Fook-Chong S, Tan EK, Yap HK, Wong KS. Polymorphism of renin-angiotensin system genes in IgA nephropathy. *Nephrology (Carlton, Vic)*. 2004; 9:304-9. <https://doi.org/10.1111/j.1440-1797.2004.00291.x>.
  35. Stratta P, Bermond F, Guarrera S, Canavese C, Carturan S, Dall'Omo A, Ciccone G, Bertola L, Mazzola G, Fasano E, Matullo G. Interaction between gene polymorphisms of nitric oxide synthase and renin-angiotensin system in the progression of membranous glomerulonephritis. *Nephrology, dialysis, transplantation*. 2004; 19:587-95.
  36. Chang HR, Cheng CH, Shu KH, Chen CH, Lian JD, Wu MY. Study of the polymorphism of angiotensinogen, angiotensin-converting enzyme and angiotensin receptor in type II diabetes with end-stage renal disease in Taiwan. *Journal of the Chinese Medical Association*. 2003; 66:51-6.
  37. Losito A, Kalidas K, Santoni S, Ceccarelli L, Jeffery S. Polymorphism of renin-angiotensin system genes in dialysis patients--association with cerebrovascular disease. *Nephrology, dialysis, transplantation*. 2002; 17:2184-8.
  38. Fradin S, Goulet-Salmon B, Chantepie M, Grandhomme F, Morello R, Jauzac P, Reznik Y. Relationship between polymorphisms in the renin-angiotensin system and nephropathy in type 2 diabetic patients. *Diabetes & metabolism*. 2002; 28:27-32.
  39. Basset el EA, Berthoux P, Cecillon S, Deprle C, Thibaudin D, De Filippis JP, Alamartin E, Berthou F. Hypertension after renal transplantation and polymorphism of genes involved in essential hypertension: ACE, AGT, AT1 R and eNOS. *Clinical nephrology*. 2002; 57:192-200.
  40. Thomas GN, Critchley JA, Tomlinson B, Lee ZS, Young RP, Cockran CS, Chan JC. Albuminuria and the renin-angiotensin system gene polymorphisms in type-2-diabetic and in normoglycemic hypertensive Chinese. *Clinical nephrology*. 2001; 55:7-15.
  41. Lovati E, Richard A, Frey BM, Frey FJ, Ferrari P. Genetic polymorphisms of the renin-angiotensin-aldosterone system in end-stage renal disease. *Kidney international*. 2001; 60:46-54. <https://doi.org/10.1046/j.1523-1755.2001.00769.x>.
  42. Zychma MJ, Zukowska-Szzechowska E, Lacka BI, Grzeszczak W. Angiotensinogen M235T and chymase gene CMA/B polymorphisms are not associated with nephropathy in type II diabetes. *Nephrology, dialysis, transplantation*. 2000; 15:1965-70.
  43. Wu S, Xiang K, Zheng T, Sun D, Weng Q, Zhao H, Li J. Relationship between the renin-angiotensin system genes and diabetic nephropathy in the Chinese. *Chinese medical journal*. 2000; 113:437-41.
  44. van Ittersum FJ, de Man AM, Thijssen S, de Knijff P, Slagboom E, Smulders Y, Tarnow L, Donker AJ, Bilo HJ, Stehouwer CD. Genetic polymorphisms of the renin-angiotensin system and complications of insulin-dependent diabetes mellitus. *Nephrology, dialysis, transplantation*. 2000; 15:1000-7.
  45. Wang J, Zhu X, Yang L, Liu Y, Zhou W, Li H. Relationship between angiotensinogen gene M235T variant with diabetic nephropathy in Chinese NIDDM. *Chinese medical journal*. 1999; 112:797-800.
  46. Miura J, Uchigata Y, Yokoyama H, Omori Y, Iwamoto Y. Genetic polymorphism of renin-angiotensin system is not associated with diabetic vascular complications in Japanese subjects with long-term insulin dependent diabetes mellitus. *Diabetes research and clinical practice*. 1999; 45:41-9.
  47. Freire MB, Ji L, Onuma T, Orban T, Warram JH, Krolewski AS. Gender-specific association of M235T polymorphism in angiotensinogen gene and diabetic nephropathy in NIDDM. *Hypertension*. 1998; 31:896-9.
  48. Ringel J, Beige J, Kunz R, Distler A, Sharma AM. Genetic variants of the renin-angiotensin system, diabetic nephropathy and hypertension. *Diabetologia*. 1997; 40:193-9. <https://doi.org/10.1007/s001250050662>.
  49. Pei Y, Scholey J, Thai K, Suzuki M, Cattran D. Association of angiotensinogen gene T235 variant with progression of immunoglobulin A nephropathy in Caucasian patients. *The Journal of clinical investigation*. 1997; 100:814-20. <https://doi.org/10.1172/jci119596>.
  50. Marre M, Jeunemaitre X, Gallois Y, Rodier M, Chatellier G, Sert C, Dusselier L, Kahal Z, Chaillous L, Halimi S, Muller A, Sackmann H, Bauduceau B, et al. Contribution of genetic polymorphism in the renin-angiotensin system to the development of renal complications in insulin-dependent diabetes: Genetique de la Nephropathie Diabetique (GENEDIAB) study group. *The Journal of clinical investigation*. 1997; 99:1585-95. <https://doi.org/10.1172/jci119321>.

51. Tarnow L, Cambien F, Rossing P, Nielsen FS, Hansen BV, Ricard S, Poerier O, Parving HH. Angiotensinogen gene polymorphisms in IDDM patients with diabetic nephropathy. *Diabetes*. 1996; 45:367-9.
52. Schmidt S, Giessel R, Bergis KH, Strojek K, Grzeszczak W, Ganten D, Ritz E. Angiotensinogen gene M235T polymorphism is not associated with diabetic nephropathy. The Diabetic Nephropathy Study Group. *Nephrology, dialysis, transplantation*. 1996; 11:1755-61.
53. Fogarty DG, Harron JC, Hughes AE, Nevin NC, Doherty CC, Maxwell AP. A molecular variant of angiotensinogen is associated with diabetic nephropathy in IDDM. *Diabetes*. 1996; 45:1204-8.
54. Egger M, Davey Smith G, Schneider M, Minder C. Bias in meta-analysis detected by a simple, graphical test. *BMJ*. 1997; 315:629-34.
55. Lin C, Chu CM, Lin J, Yang HY, Su SL. Gene-gene and gene-environment interactions in meta-analysis of genetic association studies. *PloS One*. 2015; 10:e0124967. <https://doi.org/10.1371/journal.pone.0124967>.
56. Lin C, Yang HY, Wu CC, Lee HS, Lin YF, Lu KC, Che CM, Lin FH, Kao SY, Su SL. Angiotensin-converting enzyme insertion/deletion polymorphism contributes high risk for chronic kidney disease in Asian male with hypertension--a meta-regression analysis of 98 observational studies. *PloS One*. 2014; 9:e87604. <https://doi.org/10.1371/journal.pone.0087604>.
57. Lin C, Chu CM, Su SL. Epistasis Test in Meta-Analysis: A Multi-Parameter Markov Chain Monte Carlo Model for Consistency of Evidence. *PLoS One*. 2016; 11:e0152891. <https://doi.org/10.1371/journal.pone.0152891>.
58. Ceolotto G, Papparella I, Bortoluzzi A, Strapazon G, Ragazzo F, Bratti P, Fabricio AS, Squarcina E, Gion M, Palatini P, Semplicini A. Interplay between miR-155, AT1R A1166C polymorphism, and AT1R expression in young untreated hypertensives. *American journal of hypertension*. 2011; 24:241-6. <https://doi.org/10.1038/ajh.2010.211>.
59. Xu JM, Song X, Gao F, Wang R. Association between the AGTR1 A1166C polymorphism and risk of IgA nephropathy: a meta-analysis. *Genetics and molecular research*. 2015; 14:19371-81. <https://doi.org/10.4238/2015.December.29.47>.
60. Braliou GG, Grigoriadou AM, Kontou PI, Bagos PG. The role of genetic polymorphisms of the Renin-Angiotensin System in renal diseases: A meta-analysis. *Computational and structural biotechnology journal*. 2014; 10:1-7. <https://doi.org/10.1016/j.csbj.2014.05.006>.
61. Auton A, Brooks LD, Durbin RM, Garrison EP, Kang HM, Korbel JO, Marchini JL, McCarthy S, McVean GA, Abecasis GR. A global reference for human genetic variation. *Nature*. 2015; 526:68-74. <https://doi.org/10.1038/nature15393>.
62. Evangelou E, Ioannidis JP. Meta-analysis methods for genome-wide association studies and beyond. *Nature reviews Genetics*. 2013; 14:379-89. <https://doi.org/10.1038/nrg3472>.
63. Wacholder S, Chanock S, Garcia-Closas M, El Ghormli L, Rothman N. Assessing the probability that a positive report is false: an approach for molecular epidemiology studies. *Journal of the National Cancer Institute*. 2004; 96:434-42.
64. Tan SC, Yiap BC. DNA, RNA, and protein extraction: the past and the present. *Journal of biomedicine & biotechnology*. 2009; 2009:574398. <https://doi.org/10.1155/2009/574398>.
65. Moher D, Liberati A, Tetzlaff J, Altman DG. Preferred reporting items for systematic reviews and meta-analyses: the PRISMA statement. *PLoS medicine*. 2009; 6:e1000097. <https://doi.org/10.1371/journal.pmed.1000097>.
66. Higgins JPT, Green S. *Cochrane Handbook for Systematic Reviews of Interventions Version 5.1.0 [updated March 2011]*. The Cochrane Collaboration 2011. [www.cochrane-handbook.org](http://www.cochrane-handbook.org).